

Job _____

Item No _____

PowerMax200x2™ Gas Booster Heater

Model: **PM200x2N™** or **PM200x2L™**

| Temperature Rise | 40° Rise | 50° Rise | 60° Rise | 70° Rise | 140° Rise |
|--------------------|----------|----------|----------|----------|-----------|
| Gallons per Minute | 17.4 | 14 | 11 | 10 | 5 |
| Gallons per Hour | 1040 | 840 | 660 | 600 | 300 |



FEATURES AND BENEFITS

- Single point water, gas and electrical connections
- Factory-provided pressure and temperature relief valve
- Can be installed in a remote location up to 150 feet from the scullery
- All waterways constructed of stainless steel, copper and brass for corrosion protection and clean operation
- Simple, easy maintenance through front panel
- All stainless steel cabinet and frame
- Instant 185°F water provided consistently to dishwasher rinse cycle
- Welded stainless steel accumulator (limited lifetime warranty) maintains rinse water at 185°F
- Woven Fiber Power Burners



- Radial solid copper fin-tube heat exchanger for 360° heat transfer
- Cleanable intake air filters
- Burners activated by water flow & temperature
- Advanced microprocessor controls
- Natural Gas or Liquid Propane (199,900 BTUH per Burner)
- Can provide 100% of hot water requirement for many restaurants
- Stainless Steel Seismic Legs are standard

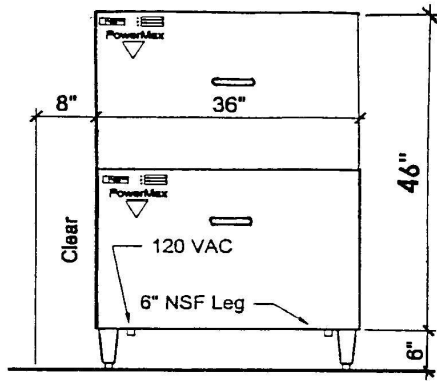
ACCESSORIES AND OPTIONS

(available at additional cost)

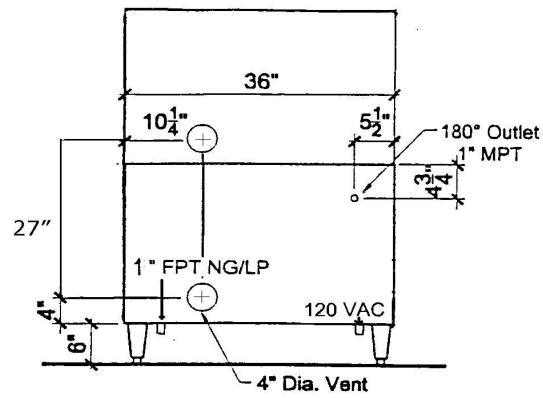
- EZ-Vent Kit for Venting through dishwasher ventilation system
- Factory Authorized StartUp
- Re-circulating Kit required if booster is located more than 5 ft from dishwasher rinse valve
 - ¾" for remote installations and/or single tank hot water coil tank heat (also requires a CT-1 module)
 - 1-¼" for long distance remote installations and/or 2 tank hot water coil tank heat and/or 2 dishwasher rinse service (also requires CT-2 module)
- Water Hammer Arrester
- Water Pressure Gauge
- Water Temperature Gauge
- Water Pressure/Temperature Gauge
- High Pressure water pressure reducing valve (needed if water supply pressure exceeds 80psi)
- Low Pressure water pressure reducing valve (for dishwasher rinse; installed after booster & before D/W rinse)
- Auxiliary PowerVent required for extended flue lengths. Call factory
- EZ Install Kit
- Expansion Tank

PowerMax200x2™ – High Output Gas Booster Heater

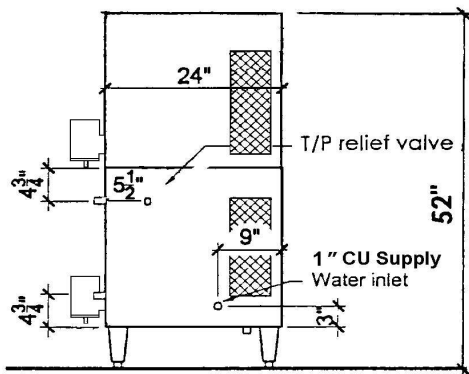
Model: **PM200x2N™** or **PM200x2L™**



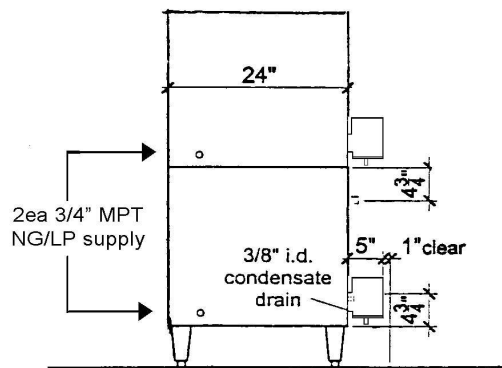
Front Elevation



Rear Elevation



Left Elevation



Right Elevation

| Model Number | BtuH per burner Natural or Propane | Gas Connection | Water Supply | Electrical Connection | Gas Pressure Regulators | Shipping Weight |
|--------------|---------------------------------------|-------------------|-----------------|--------------------------|----------------------------|--------------------|
| PM200x2™ | 2 @ 199,900 | 2ea-3/4" NPT | 1" cu | 120V 1ph 12.4 amps | Two Supplied | 875 lbs |

| Natural Gas Pressure WC @ Inlet | | LP Gas Pressure WC @ Inlet | | Manifold Pressure WC | | Water Pressure (Flow) | | Dishwasher Rinse Re-circulating Loop | Clearance From Combustible Surface | | | Vent Per Local Code Auxiliary Power Vent Required for extended flue lengths Call factory |
|---------------------------------------|-------|----------------------------------|-----|----------------------------|-----------------|-----------------------------|-----------|--|--|-----|-------|---|
| Min | Max | Min | Max | Nat | LP | Min | Max | 3/4", 1" or 1 1/4" NPT * | Side | Top | Rear | |
| 7" | 10.5" | 10" | 14" | 2.75" - 3.5" | 6.5" - 8" | 40 psi | 80 psi | Required if outlet is more than 5 feet from rinse valve of dishwasher | 6" L 1" R | 1" | 6"*** | |

| Temperature Rise | 40°F | 50°F | 60°F | 70°F | 140°F |
|--------------------|------|------|------|------|-------|
| Gallons Per Minute | 17.4 | 14 | 11 | 10 | 5 |
| Gallons Per Hour | 1040 | 840 | 660 | 600 | 300 |

*Contact factory if booster will be supplying dishwasher fill valves or tank heat.

**1" from back of exhaust vent

Note: May be vented through the dishwasher canopy or pant-leg exhaust system per 1991 Uniform Mechanical Code Sec 916. & 917. Check with local authority



Printed in USA

R 08/15



PowerMax200x2™ Gas Booster Heater specification

Booster heater shall be a PowerMax200x2™ gas booster water heater, Model PM200x2™ as manufactured by Vanguard Technology Inc., Eugene, OR 97402. Booster to be fired by two 199,900 Btu woven fiber power burners, using natural gas or liquid propane fuel. Burners to be ignited by means of a hot surface igniter and a redundant intermittent pilot. Heat exchangers to be of heavy duty finned copper tubing, .065" thickness and carry a 5 year limited warranty. Standard equipment to include gas pressure regulating valve, internal bronze-stainless circulation pumps, integrated solid state temperature controls, temperature and pressure relief valves, cleanable intake air filters, and LED temperature display. Booster frame, body panels, accumulator tank, and flue collars shall be of all stainless steel construction. Unit shall stand on 6 inch adjustable stainless seismic NSF approved legs. The 4.8 gallon accumulator tank shall carry a limited lifetime warranty. Stainless steel front panel to be removable for access to all components without disconnecting booster from its installed location. Booster heater shall produce 1040 gph @ 40°F ΔT; 600 gph @ 70°F ΔT. Booster to be rated at 88%-94% operating efficiency, minimum. The PM200x2™ can be installed up to 150 feet from the dishwasher rinse valve when equipped with a Vanguard circulation kit. The circulation loop shall be 3/4" to 1 1/2" copper (see manual), insulated to a value of R-4. Loop to be furnished and installed by others. When installed with a remote circulation loop or with 1 or 2 tank dishwasher hot water heating coils, PowerMax™ Booster will also include a CT1-C or CT-2-C return connection kit. PowerMax™ Booster may be vented through wall or roof, or with optional S. S. EZ-Vent Kit, may be vented through the dishwasher condensate hood or cowl vent system.